



ST PETER'S • CAMBRIDGE
NEW ZEALAND

INFORMATION
FOR PARENTS



CONTENTS

SCHOOL TELEPHONE NUMBERS.....	1
WELCOME TO ST PETER'S SCHOOL.....	2
ATTENDANCE	2
BOARDING HOUSES.....	2
BUSES	2
CHAPEL.....	3
CHOOSING A LAPTOP	3
CO-CURRICULAR PARTICIPATION	3
COMMUNITY PORTAL (FOR PARENTS)	4
DAILY TIMETABLE	5
HOMEWORK / PREP	5
ID CARDS	6
LATENESS.....	6
LEADERSHIP	6
LEAVE FROM SCHOOL.....	6
LEAVE – PERSONAL	6
PASTORAL CARE	7
REPORTING.....	7
SCHOOL EXPECTATIONS.....	7
SPORTS' ACADEMIES.....	8
STATIONERY.....	8
ST PETER'S ALUMNI ASSOCIATION	8
ST PETER'S MONDAYS AND TUESDAYS.....	8
ST PETER'S PARENTS' ASSOCIATION.....	8
STUDENT SERVICES CENTRE	8
STUDENT SUPPORT SERVICES.....	8
UNIFORM.....	9
UNIFORM GIRLS YEARS 7–12	9
UNIFORM BOYS YEARS 7–12	10
UNIFORM YEAR 13.....	11
VEHICLES.....	12
YEAR 7 AND 8	12

SCHOOL TELEPHONE NUMBERS

Office hours 8.00am – 4.30pm including school holidays

Our reception staff can connect you with anyone at school

Principal - Dale Burden	(07) 827 9828
Associate Principal - Julie Small	(07) 827 9840
Deputy Principal - Greg Haines	(07) 827 9819
Director of Boarding - Brenton Joubert	(07) 827 9810
Acting Assistant Principal - Jess Patrick	(07) 827 9899 ext. 428
Acting Assistant Principal - Nick Power	(07) 827 9899 ext. 422
Head of Junior School - Kurt O'Connell	(07) 827 9806
Business Manager - Marc Scott	(07) 827 9866
School Chaplain - Michael Bennett	(07) 827 9804
Office and Enquiries	(07) 827 9899
Absence from school	(07) 827 9899 (select Option 2)

absences@stpeters.school.nz

Admissions Office	(07) 827 9733	enrolment@stpeters.school.nz
Fees / Accounts	(07) 827 9861	
Owllet School Shop	(07) 827 9852	
Performing Arts Administrator	(07) 827 9869	
Sports Administrator	(07) 823 3758	

House Deans

Please call **(07) 827 9899** followed by the extension numbers listed below:

Thornton	Year 13 Lead Dean - Marty Seifert	Ext 625	martys@stpeters.school.nz
	Year 11 and Year 12 Senior Dean - Gina Boone	Ext 626	ginab@stpeters.school.nz
	Year 9 and Year 10 Junior Dean - Gail Cole	Ext 615	gailc@stpeters.school.nz
Hanna	Year 13 Lead Dean - Leanne Walker	Ext 823	leannew@stpeters.school.nz
	Year 11 and Year 12 Senior Dean - Mitch Cranch	Ext 623	mitchc@stpeters.school.nz
	Year 9 and Year 10 Junior Dean - Oliver Fox	Ext 607	oliverf@stpeters.school.nz
Chandler	Year 13 Lead Dean - Sarah Yardley	Ext 451	sarahy@stpeters.school.nz
	Year 11 and Year 12 Senior Dean - David Vesseur	Ext 604	davidv@stpeters.school.nz
	Year 9 and Year 10 Junior Dean - Rebecca McGuire	Ext 617	rebeccam@stpeters.school.nz
Swears	Year 13 Lead Dean - Elliot Sharp	Ext 629	elliots@stpeters.school.nz
	Year 11 and 12 Senior Dean - Jenny O'Leary	Ext 420	jennyl@stpeters.school.nz
	Year 9 and Year10 Junior Dean - Jodie Blackwell	Ext 627	jodieb@stpeters.school.nz

WELCOME TO ST PETER'S SCHOOL

This handbook has been designed to give new parents and caregivers an understanding of the routines and expectations of the school.

St Peter's aims to create an environment which enables students to become well-rounded individuals, who have an understanding of the Christian faith, a positive attitude in the classroom and an appreciation for cultural and sporting endeavours.

This is expressed in the School's philosophical vision statement Body, Mind and Spirit.

Students at St Peter's are expected to:

- bring a positive attitude towards learning. Be committed to completing the classwork and homework set to ensure the development of positive work habits;
- become involved in school life and take pride in all school activities;
- develop sound morals and a sense of responsibility towards others;
- have respect for self, members of the community and the environment.

The information in the handbook has been laid out alphabetically to enable easy reference.

Other relevant information:

- The school website is a source of information for all members of the St Peter's community: www.stpeters.school.nz
- The [2018 Term Calendar](#) is live on our website.
- The "This Week, Next Week" is a detailed day-by-day breakdown documentation of events, meetings etc. This is the most up-to-date publication and will be available at the start of Term 1.
- The school newsletter [InTouch](#) offers up-to-date information about our activities and events.
- The "[Community Portal](#)" is a secure site which provides you with access to information specific to your own child; such as teacher contact details and assessment feedback.
- The Events section of the website.

ATTENDANCE

Parents must notify the school by telephone (07 827 9899 ext 798) or by email absences@stpeters.school.nz by 9am on the day of absence.

BOARDING HOUSES

St Peter's Cambridge is the largest co-educational school boarding campus in New Zealand. The school's eight boarding houses provide for up to 470 boarders. We aspire to provide a world class boarding experience and welcome your feedback.

There are four girls' boarding houses: School House, Lippincott House, Wrigley House and Beaufort House. The boys' boarding houses are Morris House, Riddet House, Oliphant House and Broadhurst House.

Our Boarding Houses are horizontally aligned. This means students do not remain in one house during their time here, but are aligned in their respective year levels within a boarding house, each house catering for 2 or 3 year levels.

A House Director manages each boarding house with a Matron and at least three house assistants. The House Director is normally a member of our teaching staff. If your child is a boarder you will be provided with further information regarding the House Director and Matron's contact details, routines and expectations of your child's boarding house.

BUSES

St Peter's is well serviced by our own bus routes throughout the Waikato area including Cambridge, Whatawhata, Hamilton North West, Hamilton Central, Rototuna, Matamata, Morrinsville, Putaruru, and Te Awamutu.

Pick up/drop off points are relatively flexible if they are along the existing bus routes. All bus routes and stops are reviewed in December each year, with bus routes and size matched to demand.

Students should be waiting at their designated pick up point in their school uniform 10 minutes prior to the scheduled pick up time. Pick up times on Friday's will be different to Monday – Thursday due to classes starting later on Fridays.

Buses depart school from outside the Day Houses at the following times:

- 5.00pm Monday–Thursday
- 3.35pm Friday

The bus fees are advised prior to the start of each school year and are charged to your school account in eight instalments between February and September. The bus fee is a fixed, non-refundable, annual amount, charged regardless of use.

It is important that bus passes are retained throughout the year as passes are periodically checked against our bus lists to ensure each student travelling has the correct bus pass.

To find out more about the St Peter's bus service please feel free to contact the Admissions Office on 07 827 9899 ext. 767.

CHAPEL

St Peter's was founded on Anglican principles and the Chapel is at the heart of our school. There is no test of faith to enter St Peter's; however, all students attend chapel services and show respect for the founding principles of the school. Chapel services are held weekly during the school day and, in addition, boarders attend regular Sunday evening services each term which are calendared.

CHOOSING A LAPTOP

Selecting a laptop is a personal choice for the individual and family. Some families are Apple orientated and others, Windows. The school has invested in an infrastructure that is non operating, system specific, to allow individuals to choose a device which suits them best.

The laptop chosen will be dependent on learning style, subject selection, and what is supported at home.

Technology is continually evolving and so is the functionality of devices, thus the device of choice may change over time.

If you plan to purchase a new laptop, St Peter's currently recommends either an Apple or Microsoft based laptop with the following recommended specifications:

- 10" screen;
- 6 cell battery;
- 4GB memory;
- 256GB hard drive;
- wireless internet capable;
- protective case or carry bag.

All laptops must be named. Safe lockable storage will be available. Please also consider the weight of the laptop and the size of the person carrying it.

Types of Devices

Laptops (screen size 10" or greater): These devices have the greatest functionality in our current environment. This is the school's primary device.

Along with a laptop, students may also bring other devices to school such as:

Smart Phones and iPod Touches: These devices have great functionality for creativity and portability but are limited due to a very small viewing area. Smart phones and iPods are not recommended as a primary device and are more suited to being a companion device.

Tablets (screen size 9.7" or greater): These devices have great functionality for creativity and portability, with a usable screen size. However, there are currently limitations with these devices when accessing some Internet-based content used by the school and when uploading assignment files. In addition, there are some limitations around the availability of applications that may be required. These are not recommended as the students' primary devices, but are useful as a companion device.

CO-CURRICULAR PARTICIPATION

Every student is expected to take part in at least one winter and one summer co-curricular activity each year. We are proud of the successes that have been achieved over the long history of the school.

Last year many students represented the school in a wide range of sport and performing art activities. We encourage students to make the most of the opportunities offered in our variety of co-curricular programmes eg. Rowing, dance, basketball, football, debating, netball, lacrosse, hockey, speech and many more.

There are two sports musters each year, summer and winter. Students put their names forward to play a particular sport and they are then assigned to the appropriate teams, according to their age and ability level.

- The Summer Sports Muster is held in the second week of Term 1
- The Winter Sports Muster is held in the eighth week of Term 1.

Enquiries may be made to the Director of Sport, Nic Slade, ph 021 818 923 or email nics@stpeters.school.nz

COMMUNITY PORTAL (FOR PARENTS)

You can use the "Community Portal" to:

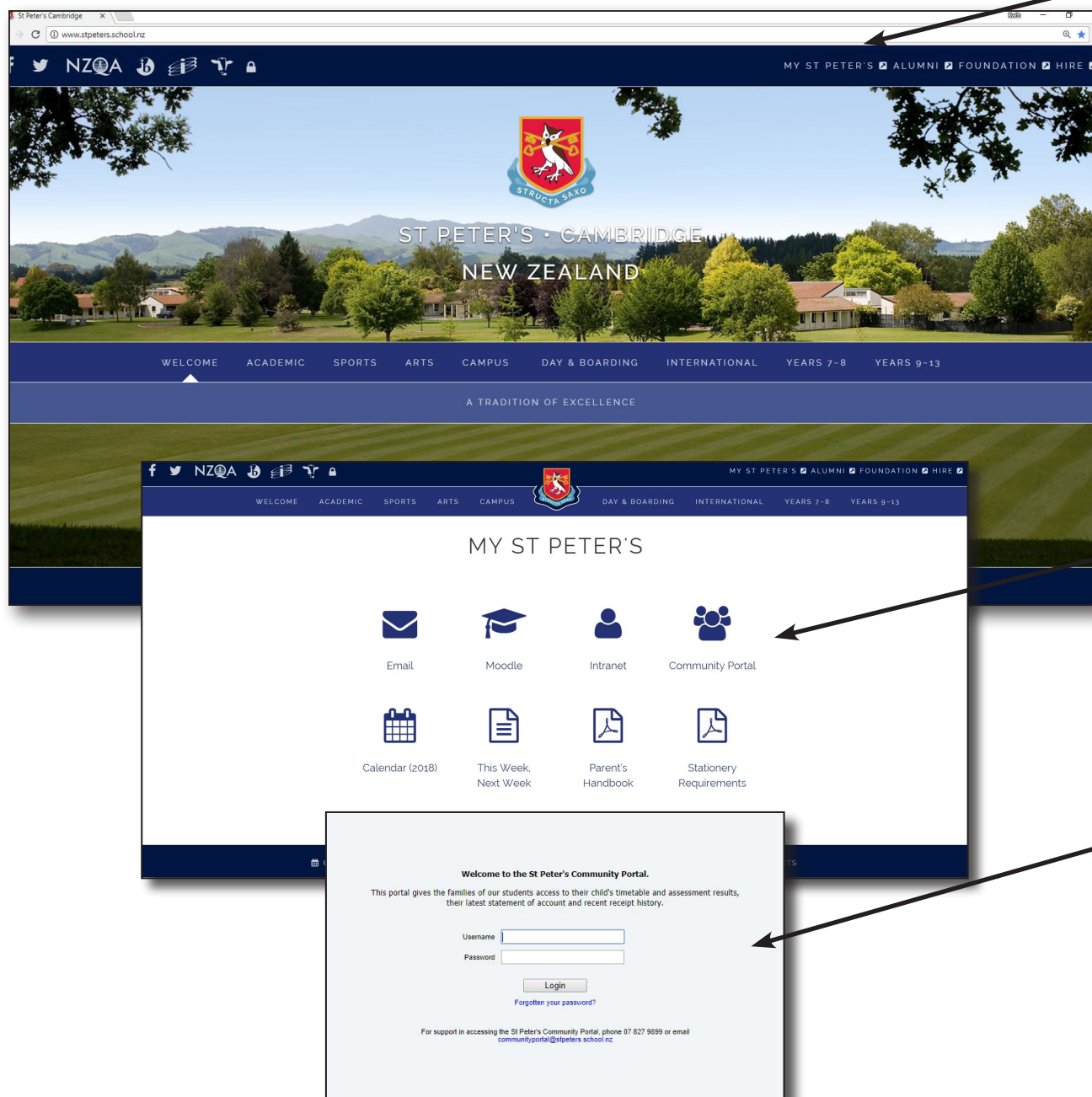
- view your child's timetable;
- view teacher comments and assessment feedback;
- contact your child's Dean, teachers and coaches;
- view your account statements (provided you are the fee payer);
- access information such as daily notices and Parents Association details.

The parents' login can be accessed via the "[MY ST PETER'S](#)" section of the website.

For **new families** to gain access to the Community Portal, use the login that will be emailed to you at the start of Term 1.

If you do not receive a login, please email communityportal@stpeters.school.nz to request your personalised details.

Returning families use their existing login details.



DAILY TIMETABLE

Monday	Tuesday	Wednesday	Thursday	Friday	Saturday	Sunday
Period 1 8.15–9.05am				Staff Professional Learning 8.15–9.05am	Extra-Curricular Activities	Boarders Chapel Service 7.30pm Boarders Chapel Service 8.00pm or 7.30pm Combined Service (as published)
Period 2 9.10–10.00am				School starts Period 2 9.10–10.00am		
Break 10.00–10.25am				Break 10.00–10.25am		
Period 3 10.30–11.20am				Period 3 10.30–11.20am		
Period 4 11.25–12.15pm				Period 4 11.25–12.15pm		
Junior Lunch 12.15–1.00pm Junior (Year 7, 8, 9 and 10) Learning Groups/ Assembly 1.00–1.30pm				Lunch / Cultural Activities		
Senior (Year 11, 12 and 13) Learning Groups/ Assembly 12.20–12.50pm Senior Lunch 12.50–1.35pm						
Period 5 1.35–2.25pm				Period 5 1.35–2.25pm		
Period 6 2.30–3.20pm				Period 6 2.30–3.20pm		
After school activities as advised 3.25pm Days buses depart 5.00pm				Day buses depart 3.25pm Town leave for boarders (except prior to a Leave Weekend) 4.00–5.15pm		

The school timetable operates on a seven day rotation, 6 periods per day, each period being 50 minutes in length e.g:

	Mon	Tue	Wed	Thu	Fri
Week 1	Day 1	Day 2	Day 3	Day 4	Day 5
Week 2	Day 6	Day 7	Day 1	Day 2	Day 3

The 'Day' timetable continues from one term to the next, i.e. if school finishes on Day 3, the next term will begin on Day 4.

The 'Day' of the timetable is clearly indicated on the school calendar and the 'This Week, Next Week' information.

HOMEWORK / PREP

Homework is an important part of a student's performance at school. Completing homework (Prep) regularly will help consolidate achievement and positive learning habits.

Junior Students

At Years 7, 8, 9 and 10 the expectation is that students may receive up to 15–20 minutes of homework per subject each night (6 periods per day). If students were for some reason not set homework by a particular subject teacher, we would always encourage them to ensure the following happens:

- all work is fully completed for all subjects;
- review and revision is carried out;
- extra reading is undertaken.

Senior Students

Years 11, 12 and 13 may expect approximately 20–30 minutes per subject per night (6 periods per day).

ID CARDS

ID photos will be taken in February and Student ID Cards will be available 2–3 weeks after these photos are taken. Student ID Cards are issued by the Student Services Centre.

LATENESS

Punctuality is important. If your child is late to school, ie, arrives after the 8:15am bell on Monday, Tuesday, Wednesday and Thursday or after 9:10am on Friday he/she is to report immediately to the Student Services Centre (located next to Deans' Centre (Gardner House,) to sign in. In the case of there being a legitimate reason for this lateness, it is then up to the student to see his/her Dean with a signed note providing an explanation for this lateness. A School detention is issued automatically for lateness, unless a note is produced. NOTE: On-going lateness issues relating to traffic cannot reasonably be accepted as an on-going explanation.

LEADERSHIP

The Prefects are Year 13 students, who attend weekly leadership training sessions throughout the year.

Student House Committees meet regularly with their Deans to plan events, raise school issues and support school spirit.

Each student has the opportunity to join leadership training sessions at each year level. These sessions are led by the House Deans throughout the year.

LEAVE FROM SCHOOL

Students are required to stay within the school boundaries between 8:15am and 3:20pm on Monday, Tuesday, Wednesday, Thursday and on Friday between 9:10am and 3:20pm. If any student needs to leave school during the day, a note that explains the circumstances and is signed by the parent/caregiver is required. This is then taken to the Student Services Centre to be signed by a Dean to confirm permission has been granted for the student to leave school. (Parents/caregivers are often telephoned to confirm the note).

When your child is to leave school he/she is to take the note, previously signed by the Dean, to the Student Services Centre and sign out. The student will be issued with a St Peter's leave pass from the Student Services Centre. If returning to the school, the student must, upon their return, sign in at the Student Services Centre. Students are not to leave the school grounds without permission, and a leave pass. Students are informed of boundaries during assemblies.

PLEASE BE MINDFUL: Attendance is crucial to student success. Low attendance levels are directly linked to low achievement levels. Truancy is not the only factor of concern regarding attendance and any absence from school results in class work being missed. It is not always possible for students to sit assessments missed by being out of school for holidays. Parents are encouraged to be mindful of the impact of regular absences for appointments etc.

LEAVE – PERSONAL

Request for non-school related leave during the school year must be addressed to the Lead Dean of your child's House at least two weeks before the start of proposed leave. Please give the dates of proposed absence from school and the purpose of leave by email to:

Chandler	Ms Sarah Yardley	sarahy@stpeters.school.nz
Hanna	Ms Leanne Walker	leannew@stpeters.school.nz
Swears	Mr Elliot Sharp	elliots@stpeters.school.nz
Thornton	Mr Marty Seifert	martys@stpeters.school.nz

PASTORAL CARE

We pride ourselves on the care we extend to our students. Nurturing our students, helping them to learn key capabilities and life skills is essential to their wellbeing.

Your child will be in a House – Hanna, Thornton, Chandler, or Swears and will have a Dean responsible for the year. Each Dean oversees both the pastoral and academic needs of each student.

The House Dean is the **first point of contact for you as a parent** regarding school pastoral and academic needs.

Chandler

Year 13 Lead Dean

Sarah Yardley

sarahy@stpeters.school.nz

Year 11 and 12 House Dean

David Vesseur

davidv@stpeters.school.nz

Year 9 and 10 House Dean

Rebecca McGuire

rebeccam@stpeters.school.nz



Thornton

Year 13 Lead Dean

Marty Seifert

martys@stpeters.school.nz

Year 11 and 12 House Dean

Gina Boone

ginab@stpeters.school.nz

Year 9 and 10 House Dean

Gail Cole

gailc@stpeters.school.nz



Hanna

Year 13 Lead Dean

Leanne Walker

leannew@stpeters.school.nz

Year 11 and 12 House Dean

Mitch Cranch

mitchc@stpeters.school.nz

Year 9 and 10 House Dean

Ollie Fox

oliverf@stpeters.school.nz



Swears

Year 13 Lead Dean

Elliot Sharp

elliots@stpeters.co.nz

Year 11 and 12 House Dean

Jenny O'Leary

jennyl@stpeters.school.nz

Year 9 and 10 House Dean

Jodie Blackwell

jodieb@stpeters.school.nz



REPORTING

Student learning, progress and achievement will be reported on across the year in various ways:

- via the parent portal;
- student and parent conferences;
- written reports.

SCHOOL EXPECTATIONS

It is important that students have a clear understanding of their responsibilities and behaviours that are acceptable at school.

At St Peter's we reward students for meeting school expectations and acting responsibly across all spheres of their education.

For students who are not able to meet expectations, we will work with the student to support them to learn what the appropriate behaviour is. There are consequences applied, should students continue to not meet expectations.

At St Peter's we expect our students to:

- be polite and respectful;
- be kind and helpful;
- wear their uniform correctly and with pride;
- use mobile phones / portable devices appropriately;
- maintain a tidy school environment;
- attend each class every day.

In addition:

- no alcohol is permitted;
- no drugs are permitted;
- smoking is not permitted;
- foul language is unacceptable;
- theft is unacceptable;
- intimidation and bullying are unacceptable;
- disruptive and anti-social behaviour is unacceptable.

We aim to educate your child to be the best that they can be. We will take the time to learn about your son/daughter and to connect with him/her.

SPORTS' ACADEMIES

In addition to the many sports on offer, St Peter's offers the opportunity for students to become part of one of our sports academies. We have six academies offering specialised facilities and coaching in their sports: cycling, equestrian, golf, rowing, swimming and tennis.

In 2017 we also added rugby, football, cricket and netball academies as curriculum options for our Year 7–10 students.

STATIONERY

You will be provided with a list of items required for each subject. A copy of the requirements is available on the school intranet.

Stationery is also available for purchase throughout the year at the school shop (the Owllet). Click [HERE](#) to view the stationary requirements for each Year Level.

ST PETER'S ALUMNI ASSOCIATION

The \$250 imprest deposit paid on entry to the school, will be converted into a life membership fee of the St Peter's Alumni Association, when your child leaves St Peter's.

The Alumni Association aims to promote and keep alive, among past students, a continual and active interest in St Peter's.

The Association provides opportunities for past students to keep in touch with each other and the school, organising social events both at St Peter's and in various cities, both in New Zealand and overseas.

ST PETER'S MONDAYS AND TUESDAYS

St Peter's days are those on which we have no regular classes or school activities, giving our students and families a longer weekend. These are compulsory 'leave' weekends for boarders. St Peter's days replace some public holidays which fall mid-week, when we have a normal school day to allow for a longer weekend instead.

ST PETER'S PARENTS' ASSOCIATION

The St Peter's Parents' Association is a group of active volunteers who are involved in a range of activities to support and engage with the school. These include providing opportunities for parents and caregivers to meet and socialise, fundraising for the school, assisting at school events, such as sports days and arranging events for parents such as evenings with guest speakers.

If you would like to find out more or join the association, please refer to the website under the Parents' Information section for current contact details, or phone reception.

STUDENT SERVICES CENTRE

Open from 8.00am – 5.00pm Monday to Friday during term time.

Student Services include student car parking, timetables, issuing and receiving forms, casual day tickets for St Peter's bus services and student ID cards.

STUDENT SUPPORT SERVICES

A comprehensive support network includes:

- Lead Dean in each House and Deans for the senior and junior levels;
- Year 7 and 8 Deans;
- Boarding House Directors;
- Careers advisors;
- Counsellors;
- International student services;
- Learning groups;
- Prefects;
- School Chaplain;
- School nurses;
- Senior Leadership Team;
- Student Services Centre staff;
- Teachers.

UNIFORM

There is a summer and winter uniform for both Prep School (Year 7–8) and Secondary School (Year 9–13) students. Formal uniform is required during formal school occasions, such as performances, debates and Chapel. Year 13 students have their own uniform, which differs from the Year 9–12 uniform.

The St Peter's uniform is to be worn with pride, both on and off campus. It must be clean, tidy and in good repair.

- School uniform must be worn at all times during the school day.
- Formal uniform is required during Friday town leave for boarders in Terms 2 and 3. Day uniform is worn during Terms 1 and 4.
- No jewellery is to be worn, apart from a watch and a plain pair of studs/sleepers for girls.
- No makeup or nail varnish is to be worn.
- Hair must be tidy and off the collar and face. Hair should not be dyed or worn in a style which brings undue attention.
- Only designated shoes are permitted. Sandals are to be worn correctly, with the heel straps done up.
- All items of clothing must be clearly named.

School uniform is available from the Owllet. The Owllet's normal shop hours are Monday to Thursday, 8.00am–5.00pm and Friday, 8.00am–3.30pm.

Consultation and uniform fitting takes around an hour (allowing for a one-on-one fitting and explanation of the various uniform items) and as such it is imperative to book an appointment. Phone: (07) 827 9852 Email: stpetersshop@alintaapparel.co.nz

Uniform prices (a guide only)

Boys	Boarding	Day
Years 7–8	\$1,700.00	\$1,540.00
Years 9–12	\$1,900.00	\$1,765.00
Year 13	\$1,645.00	\$1,370.00

Girls	Boarding	Day
Years 7–12	\$1,920.00	\$1,565.00
Year 13	\$1,610.00	\$1,400.00

UNIFORM GIRLS YEARS 7–12

Year 7–8 Formal Uniform

- Prep blazer
- White striped blouse
- School regulation skirt
- School tie
- School regulation skin-tone tights (optional in summer)
- Flat black lace up or school slip on shoes
- Shoe labels
- Black or navy hair tie



Year 9–12 Formal Uniform

- School navy blazer
- White striped blouse
- School regulation skirt
- School tie
- School regulation skin-tone tights (optional in summer)
- Flat black lace up or school slip on shoes (as below)
- Black or navy hair tie



Year 7–12 Winter Uniform

- Blazer (optional)
- White striped blouse
- School tie
- School regulation skirt
- School jersey
- School black tights
- Flat black lace up or school slip on shoes (see below)
- Rain jacket (thick/thin)*
- Black, navy or red hair ties
- Clips, headband in school colours



Year 7–12 Summer Uniform

- White striped blouse
- School striped shorts
- Red school sandals
- Black, navy or red hair tie
- Clips, headband in school colours



Year 7–8 Formal Uniform

- Prep blazer
- White striped shirt
- Grey shorts
- School tie
- Black belt
- Prep regulation socks
- Black lace up shoes
- Garters



Year 9–12 Formal Uniform

- School navy blazer
- White striped shirt
- Grey trousers
- School tie
- Black belt
- Short grey socks
- Black lace-up or slip on shoes



Year 7–8 Winter Uniform

- Blazer (optional)
- School jersey
- White striped shirt
- Grey shorts
- School tie
- Black belt
- Prep regulation socks
- Black lace up shoes
- Rain jacket (thick/thin)*
- Garters



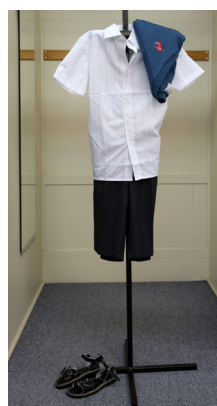
Year 9–12 Winter Uniform

- Blazer (optional)
- School jersey
- White striped shirt
- Grey shorts
- School tie
- Black belt
- Grey socks
- Black lace up shoes
- Rain jacket (thick/thin)
- Garters



Year 7–12 Summer Uniform

- White striped shirt
- Grey shorts
- Black belt
- Black sandals



*Thick jacket compulsory for boarders.

Formal Uniform - Girls

- School navy blazer
- Navy striped blouse
- School regulation skirt
- School tie
- School regulation skin-tone tights (optional in summer)
- Flat black lace up or school slip on shoes (as below)
- Black or navy hair tie



Formal Uniform - Boys

- School navy blazer
- Navy striped shirt
- Grey trousers
- School tie
- Black belt
- Short grey socks
- Black lace-up or slip on shoes



Winter Uniform - Girls

- Blazer (optional)
- Navy striped blouse
- School tie
- School regulation skirt
- Red Year 13 jersey
- School black tights
- Flat black lace up or school slip on shoes (see below)
- Rain jacket (thick/thin)*
- Black, navy or red hair ties
- Clips, headband in school colours



Winter Uniform - Boys

- Blazer (optional)
- Red Year 13 jersey
- Navy striped shirt
- Grey trousers
- School tie
- Black belt
- Short grey socks
- Black lace-up or slip on shoes
- Rain jacket (thick/thin)



Summer Uniform - Girls/Boys

- Navy striped blouse/shirt
- Navy shorts
- Red school sandals (Girls)
- Black sandals (Boys)
- Black belt (Boys)
- Black, navy or red hair tie
- Clips, headband in school colours



PE Uniform

The same for all year groups

- PE shirt
- House colour shirt
- PE shorts
- Regulation school togs
- White sport socks
- Tracksuit top
- Tracksuit pants
- St Peter's school cap



Day Students

Year 13 students may apply to bring a vehicle to school by following the link on the Community Portal. This application will then be approved by the Assistant Principal, in consultation with the student's Lead Dean.

Year 12 students may apply to bring a vehicle to school through the same link on the portal, but permission will only be approved where special circumstances apply. An email of support from the Year 12 student's parents will be required as part of the process.

All Day students will park their car in the student car park by the Equestrian Centre and may not use their car between 8.15am–3.20pm without special permission.

Students on full licenses who wish to bring passengers to school must have parent permission from the driver and the passenger. This will then be approved by the Assistant Principal, in consultation with the student's Lead Dean. A vehicle pass will be provided once the approval has been completed.

Boarding Students

Year 13 Boarders and Year 12 Boarding Leaders who wish to apply to bring a vehicle to school may apply by following the link on the school portal. This application will then be approved by the Director of Boarding, in consultation with the student's House Director.

Students on full licenses who wish to bring passengers to school must have parent permission from the driver and the passenger. This will then be approved by the Director of Boarding, in consultation with the student's House Director.

Boarding students will be required to park in designated areas at their respective Houses and hand their keys in to their House Director.

The school accepts no responsibility for damage to vehicles or for loss of contents from vehicles while parked at school.

YEAR 7 AND 8

The Year 7 and 8 learning programme provides our students with an engaging and nurturing environment in which to learn, develop and be challenged across a range of learning areas including academic, cultural, sporting and social contexts.

Our Year 7 and 8 students are affectionately known as 'Preppies'. The term, along with other traditions such as Flag Day and Star Cards, help to connect today's Year 7 and 8's to the rich history of our past students and St Peter's School in general. The term 'Preppies' also reminds us that, Arthur Broadhurst, founded St Peter's as a Prep School, back in 1936.

In 2018, ten classes will operate, with five in both Year 7 and Year 8. The New Zealand Curriculum is facilitated by a combination of homeroom and specialist teachers. Each Year 7 or Year 8 student has a homeroom teacher that also facilitates learning in the subjects of English, Mathematics and Social Studies.

Students move to specialist teachers for the subjects of Science, Physical Education (PE), Performing Arts (PFA), Technology, Visual Arts and Languages. As part of the pastoral care programme the homeroom teacher also regularly teaches the wellbeing curriculum. Our focus is on personal wellness and developing positive, healthy relationships. Your child's homeroom teacher is your **first point of contact for any queries you have regarding academic or pastoral matters**.

Each Year level also has an assigned Dean to oversee the day to day academic and pastoral care programmes. The Deans provide another layer of support and guidance to enable your child's needs to be met effectively. Communication from the Year 7 and 8 staff ensures you can follow your child's learning journey throughout the year.

In addition to posting academic information on the parent portal, the staff utilise the following two methods of communication:

- '[STP Prep](#)' is the name of our Facebook page. Here, is where we will post news and pictures of class activities, student achievements and anything of interest. You can expect to see a post about your child's class approximately once a week;
- The 'Preppies Webpage' for your child's year level. This is where you will find homework and announcements relating to class learning. For new families, a login to this page will be provided at the start of the year.

Further information relating to the Year 7 and 8 programme will be sent to you in February 2018.

The Vallentine Room in the Junior Block provides the hub for Year 7 and 8 students during break times, along with the playground and open areas outside the block. In good weather students are encouraged to get outside and play. Students need to wear their school cap during Term 1 and 4.

Learning in contexts, other than a classroom, helps students grow their capabilities of resilience, perseverance and hard work. The Year 7 and 8 students each attend separate year level camps in Term 1. The dates are outlined on the School Calendar and additional information will be communicated to parents in February 2018.



The school crest was chosen by Broadhurst and Beaufort. Beaufort, a clergyman, suggested the idea of the St Peter's key to heaven and hell. Broadhurst came up with the suggestion of an owl, symbolic of Minerva the Goddess of Wisdom. It seemed quite logical for the owl to hold the keys in its beak and this image would be emblazoned on a red shield. St Matthew's Gospel is the inspiration for the school's motto, Structa Saxo, meaning 'Founded on a Rock'. 'Thou art Peter, and upon this rock I will build my church; and the gates of hell shall not prevail against it.'

PRIVATE BAG 884
CAMBRIDGE 3450
T: +64 7 827 9899
F: +64 7 827 9812
www.stpeters.school.nz